

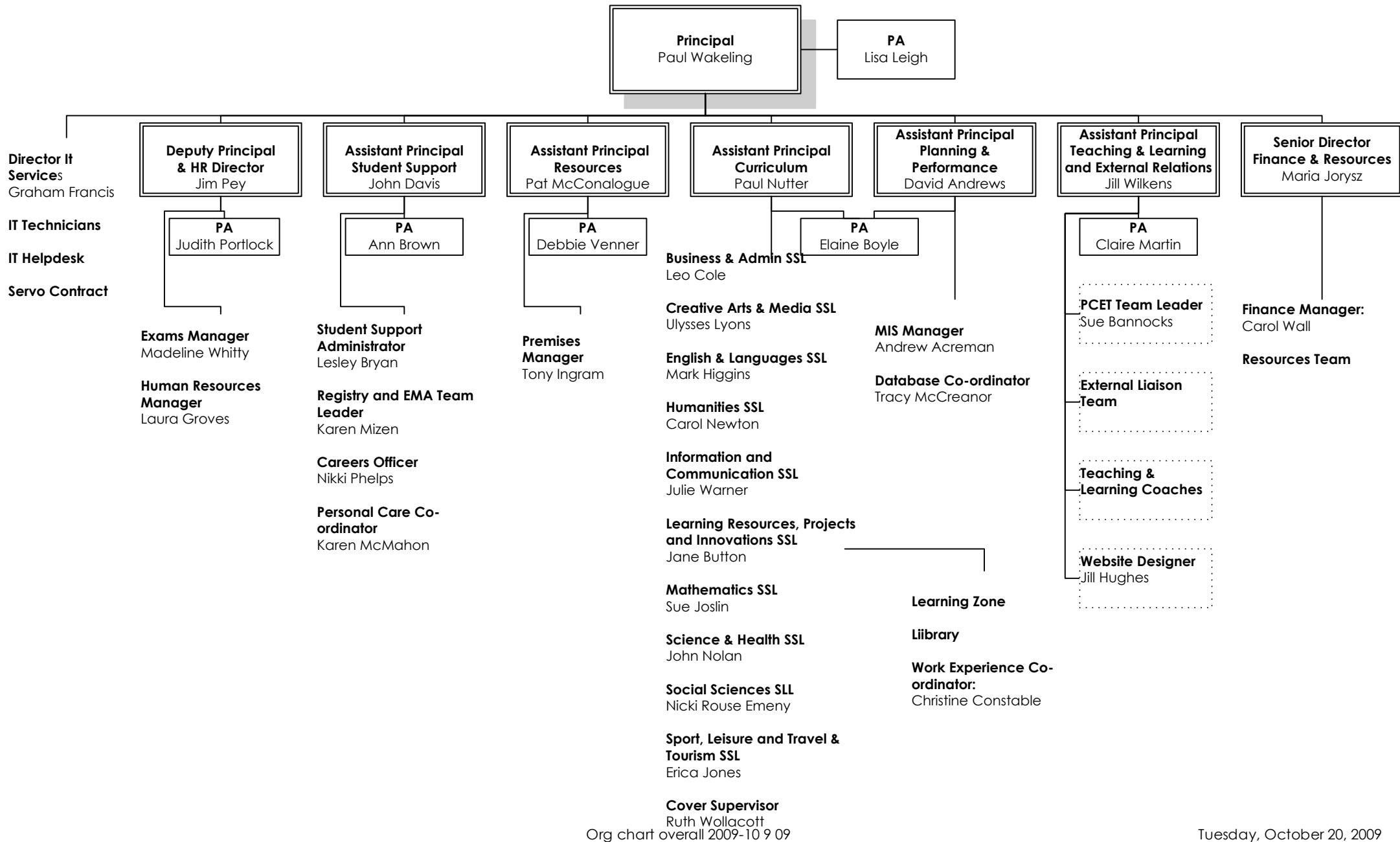


Havering Sixth Form College

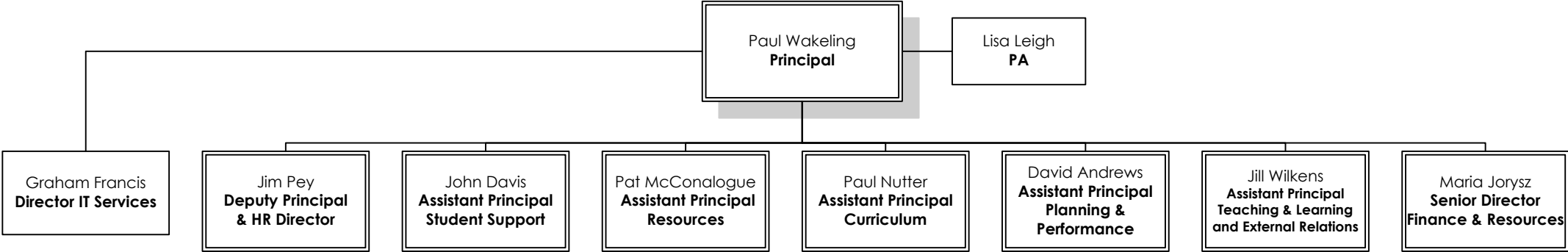
Organisation Chart 2009-10

Updated September 2009

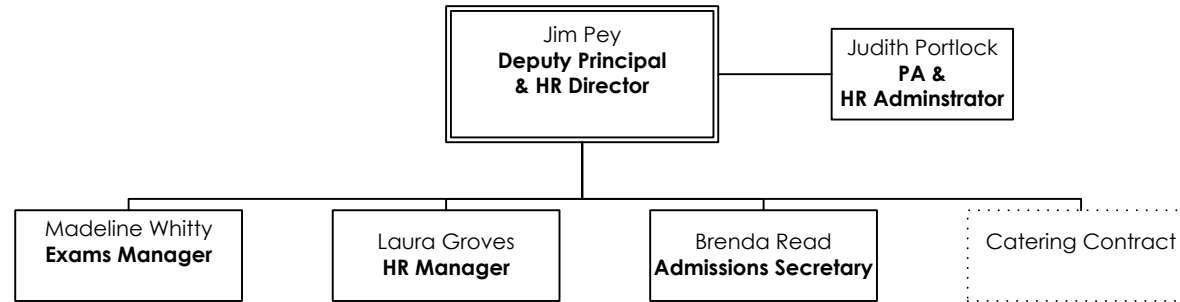
Havering Sixth Form College Organisation Chart 2009-10



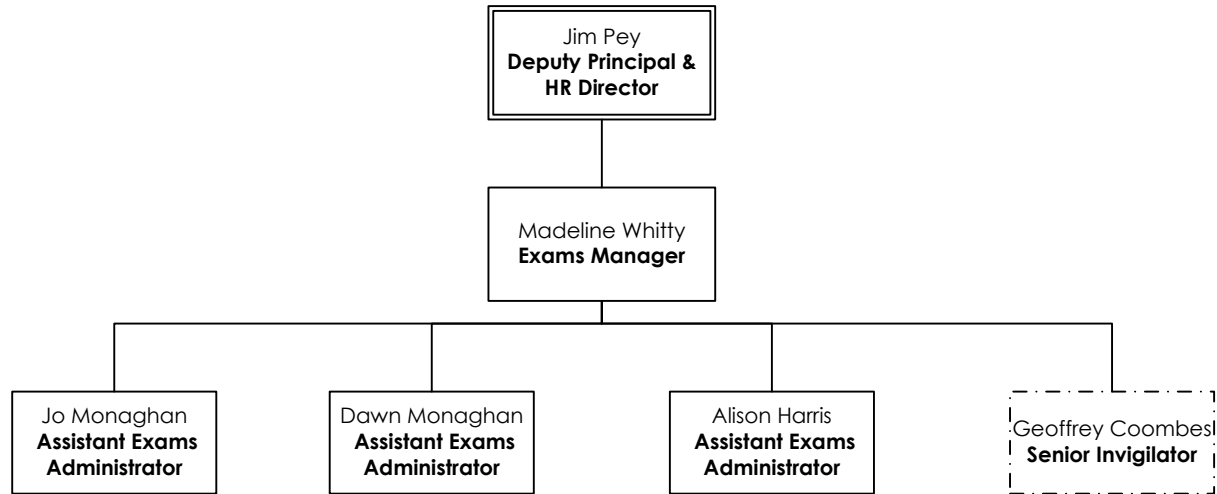
Executive Management



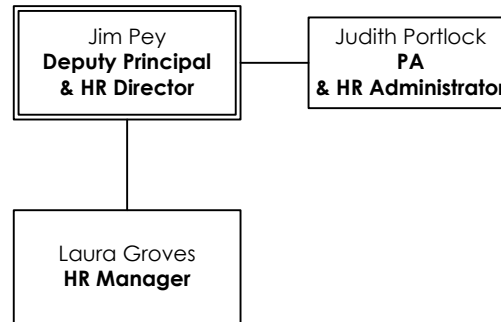
Deputy Principal



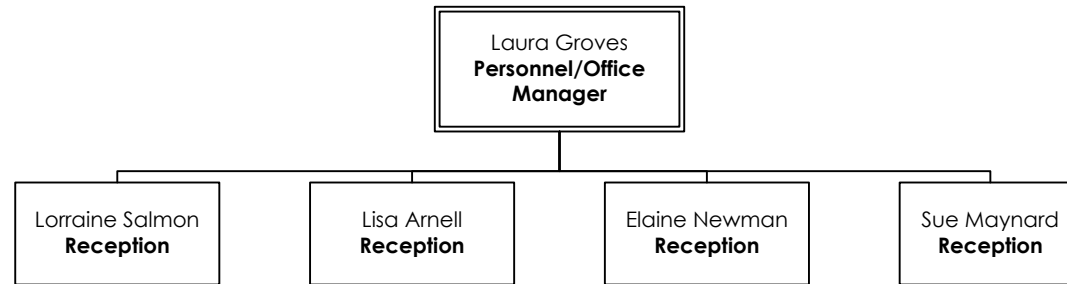
Exams



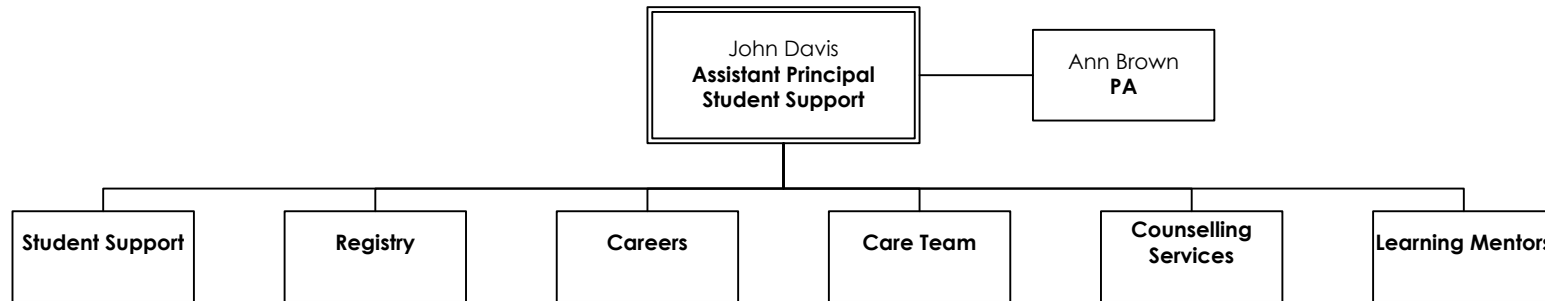
Human Resources



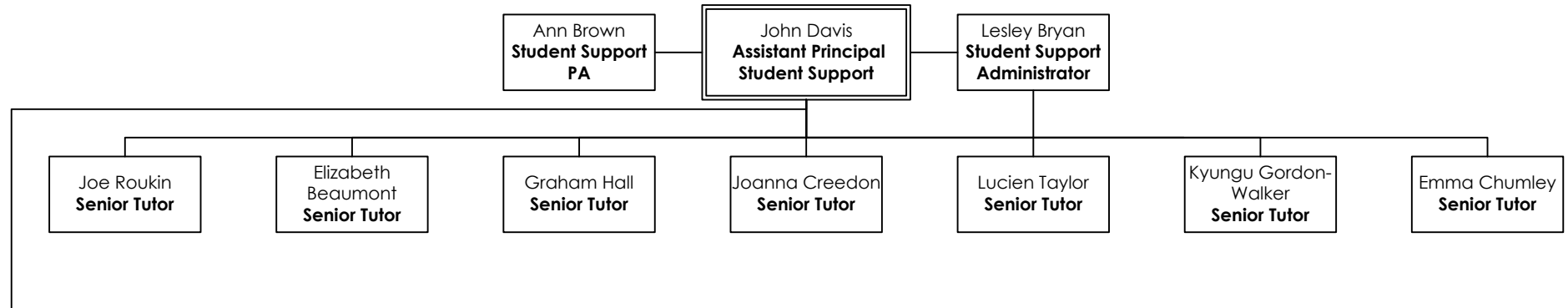
Main Office



Assistant Principal Student Support



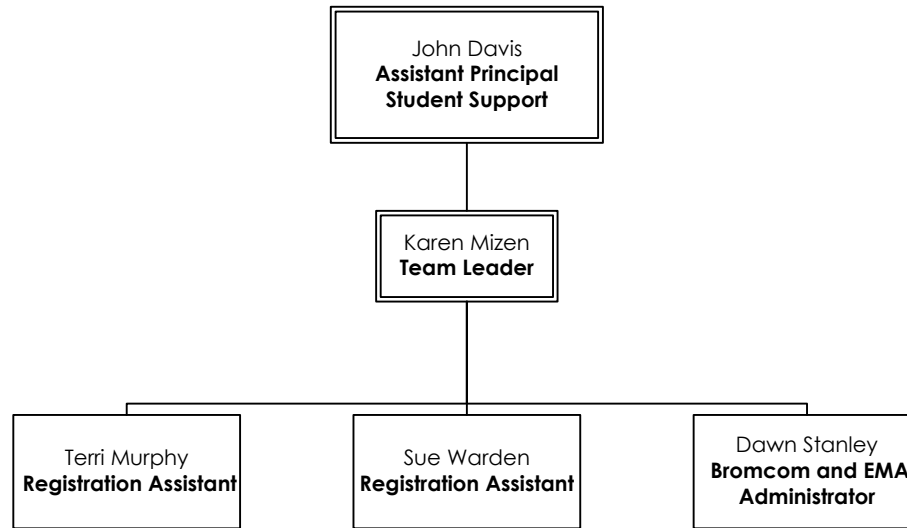
Student Support



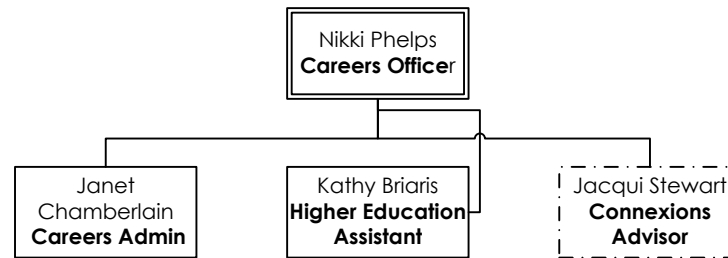
Learning Mentors:

Kathy Briaris
Jane Buckle
Vikki Kimmins
Liz Sinclair

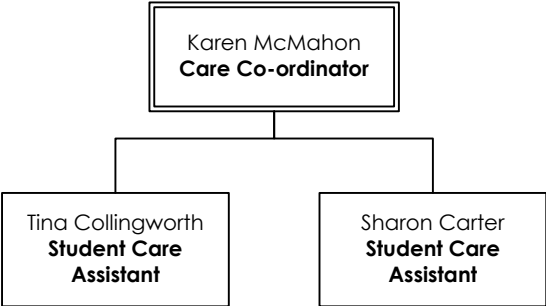
The Registry



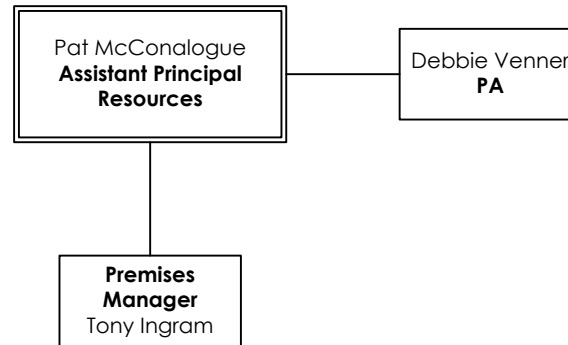
Careers



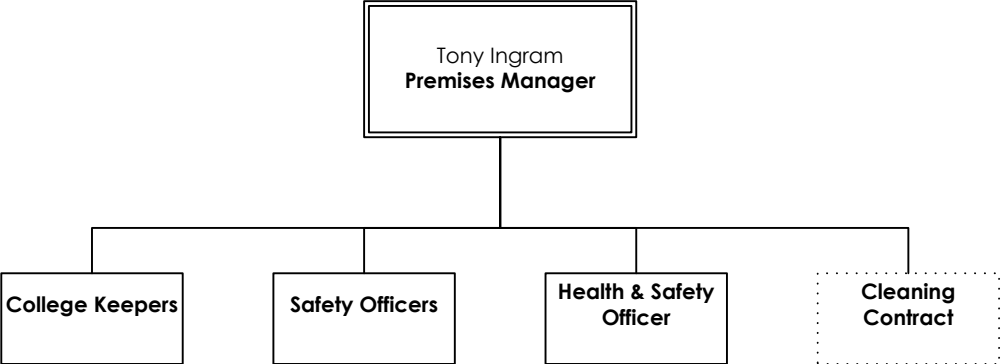
Care Team



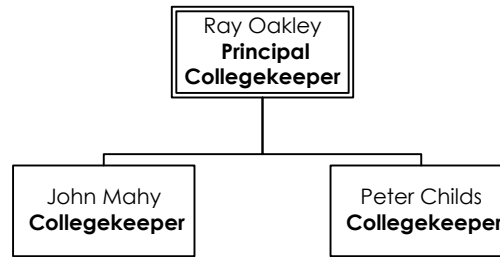
Assistant Principal Resources



Premises



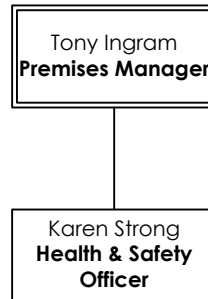
College Keepers



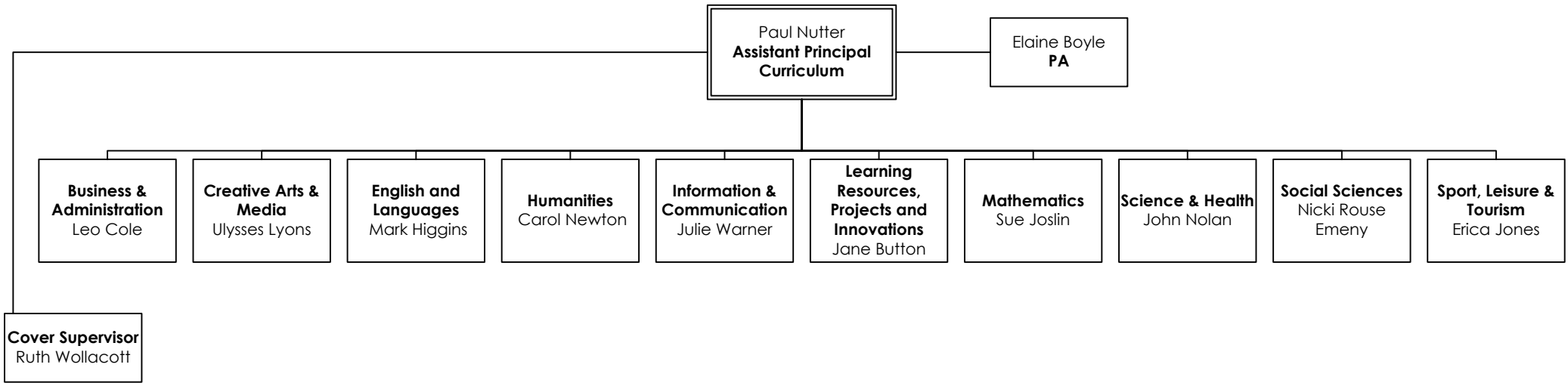
Safety Team



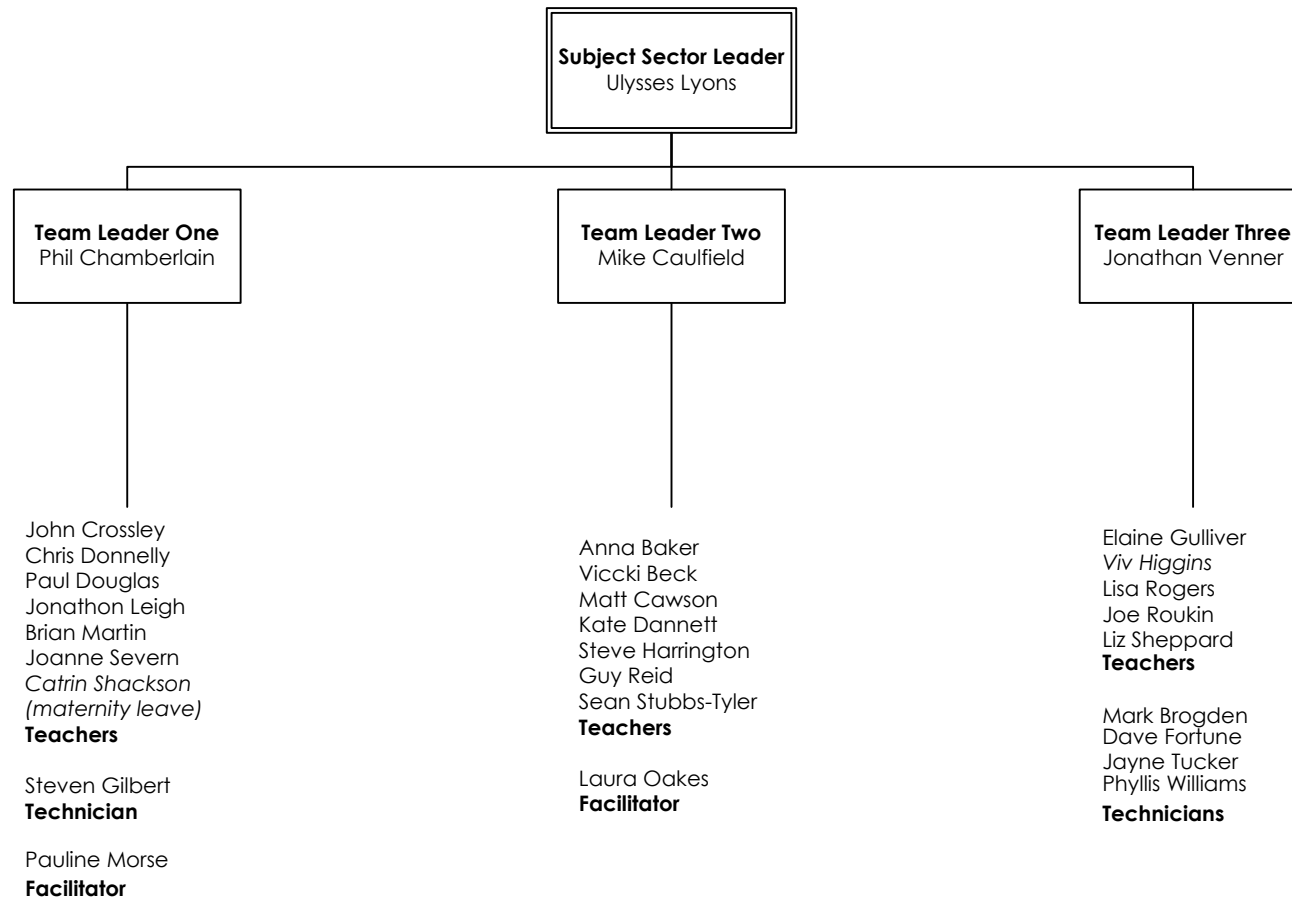
Health & Safety Team



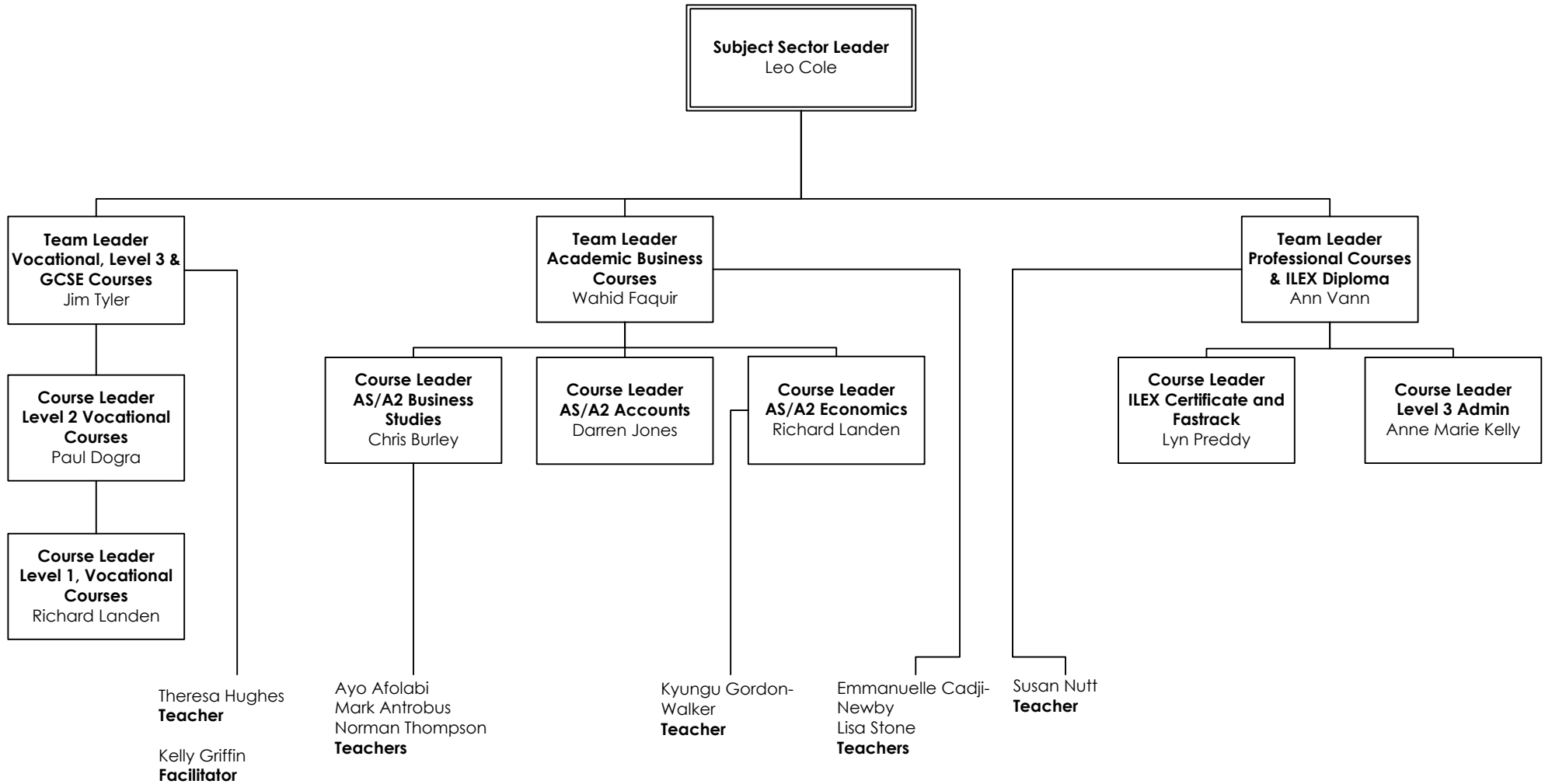
Assistant Principal Curriculum



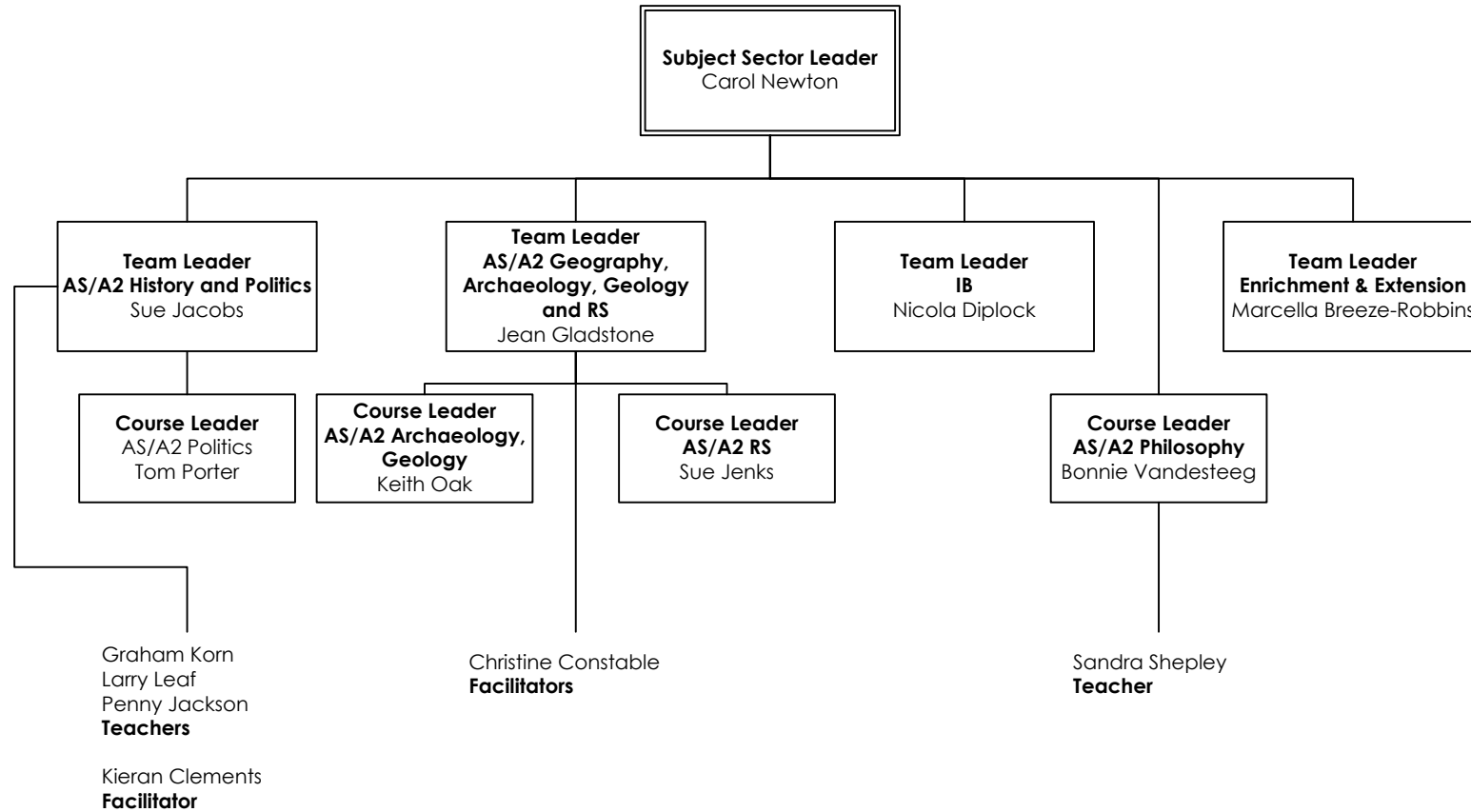
Arts and Media



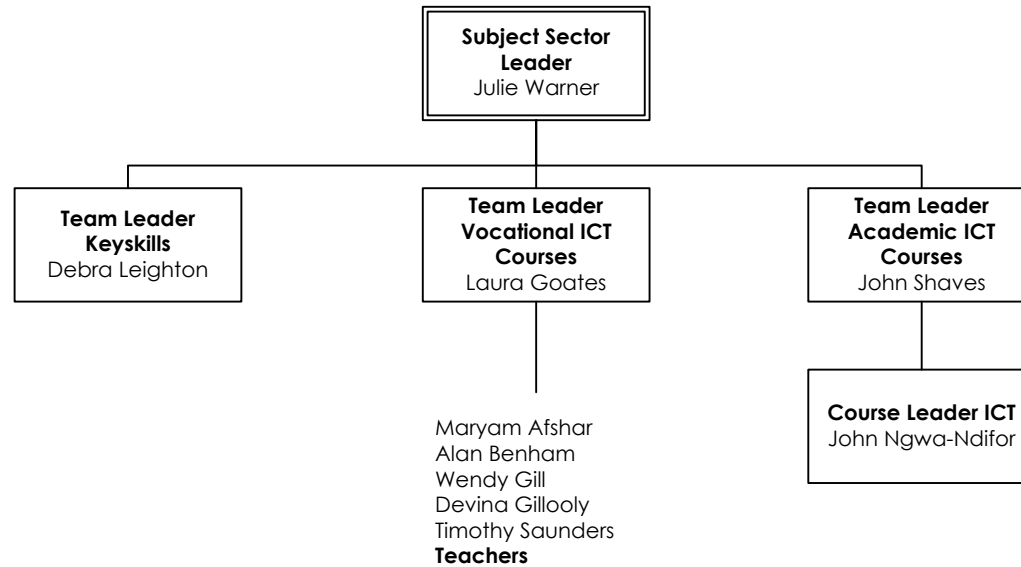
Business and Administration



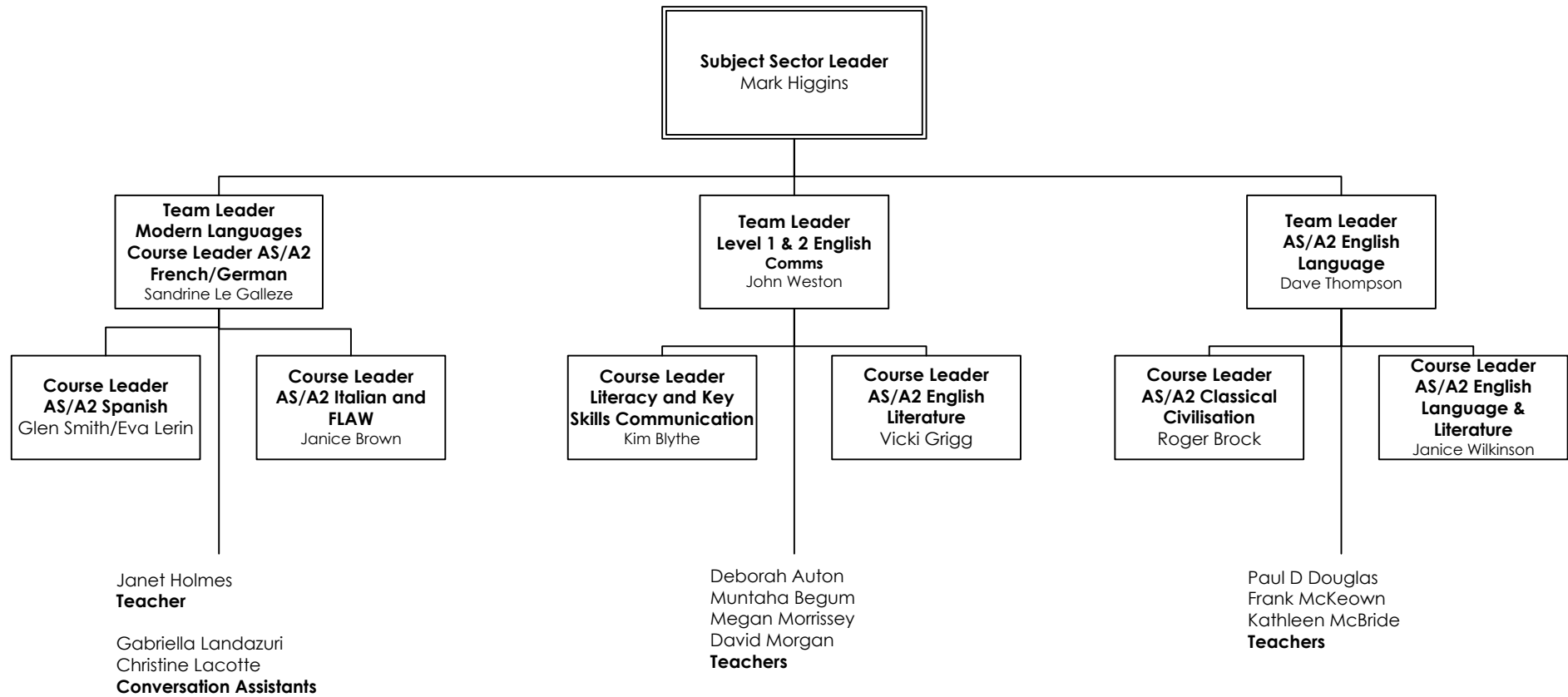
Humanities



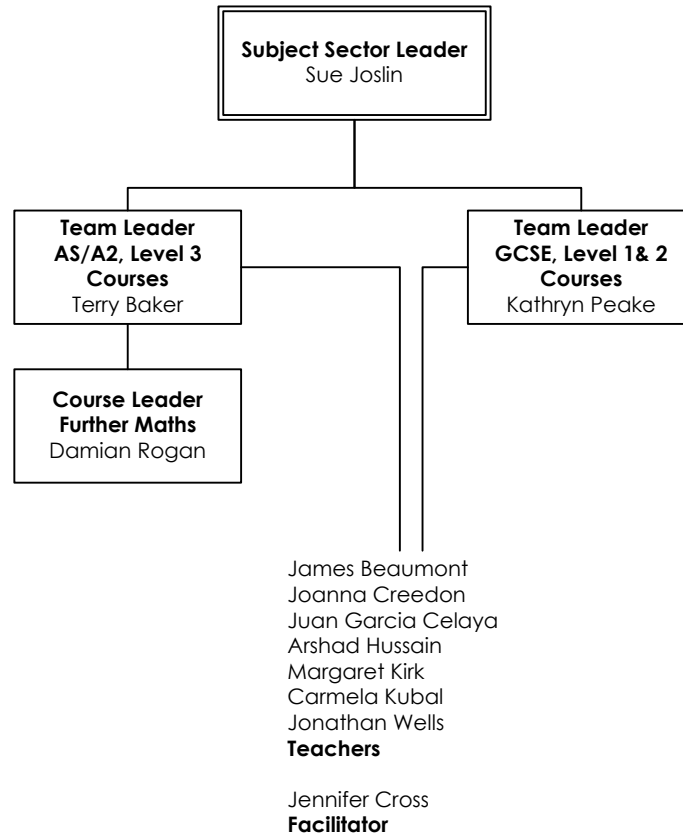
Information and Communication Technology



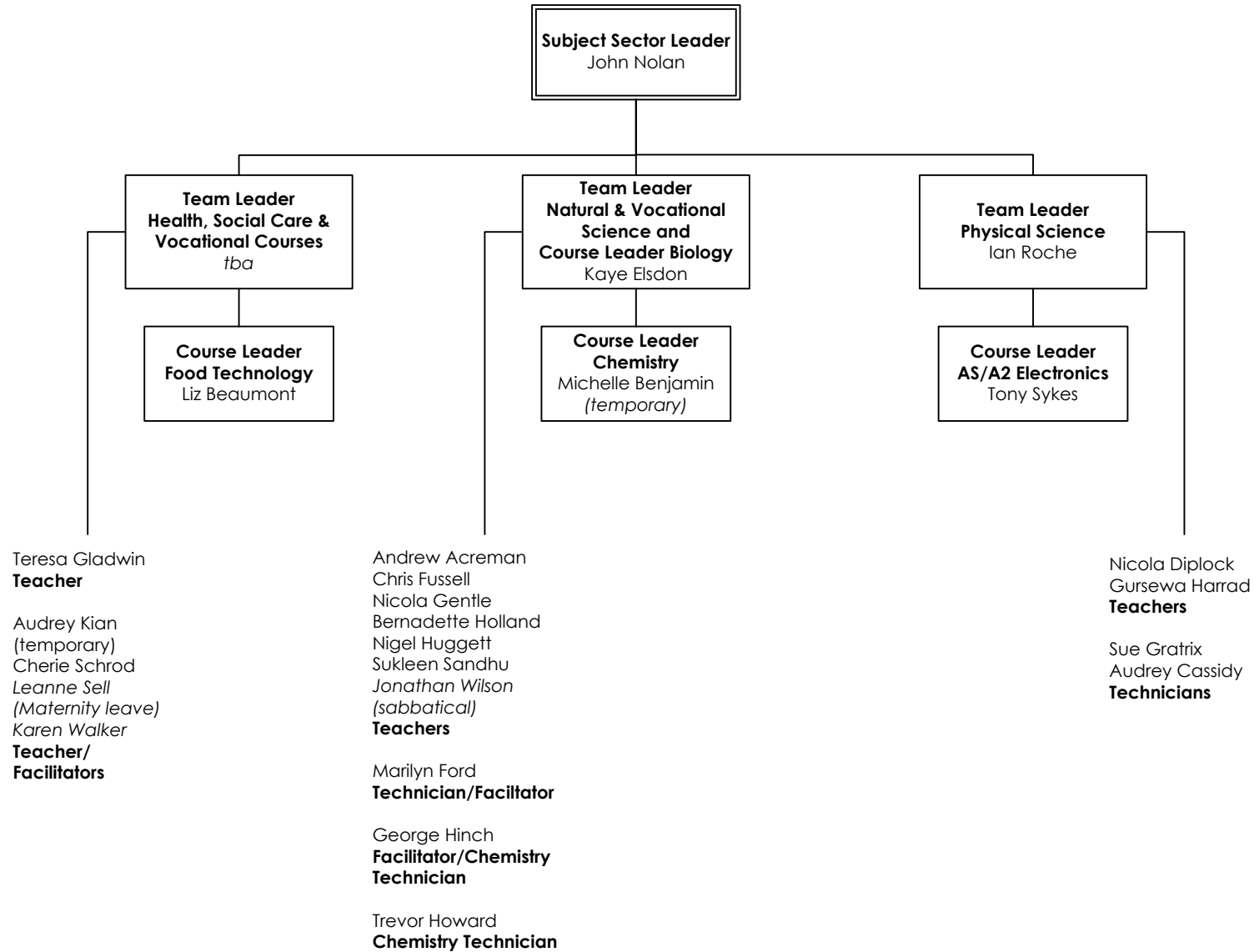
Languages and Literature



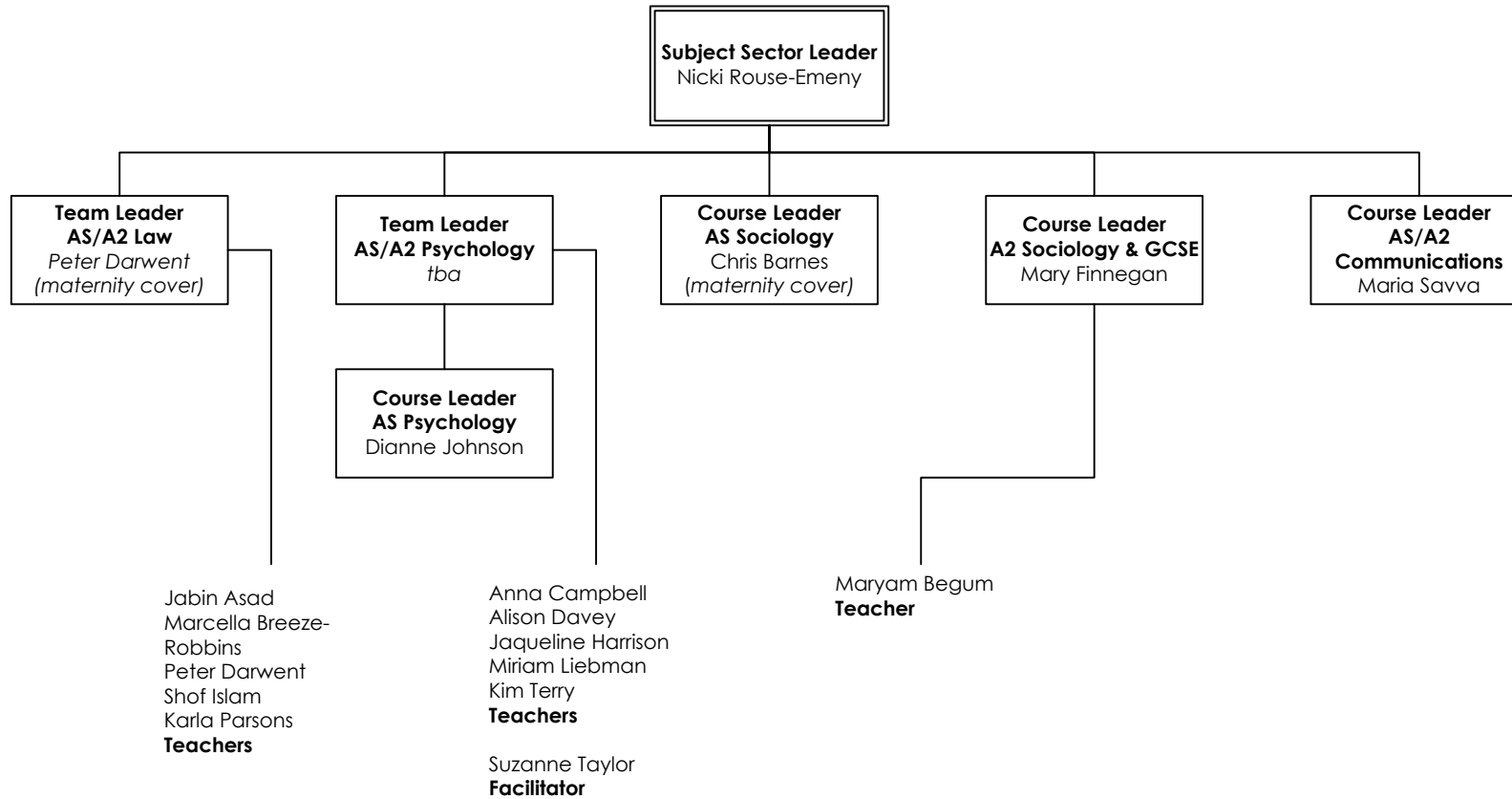
Maths



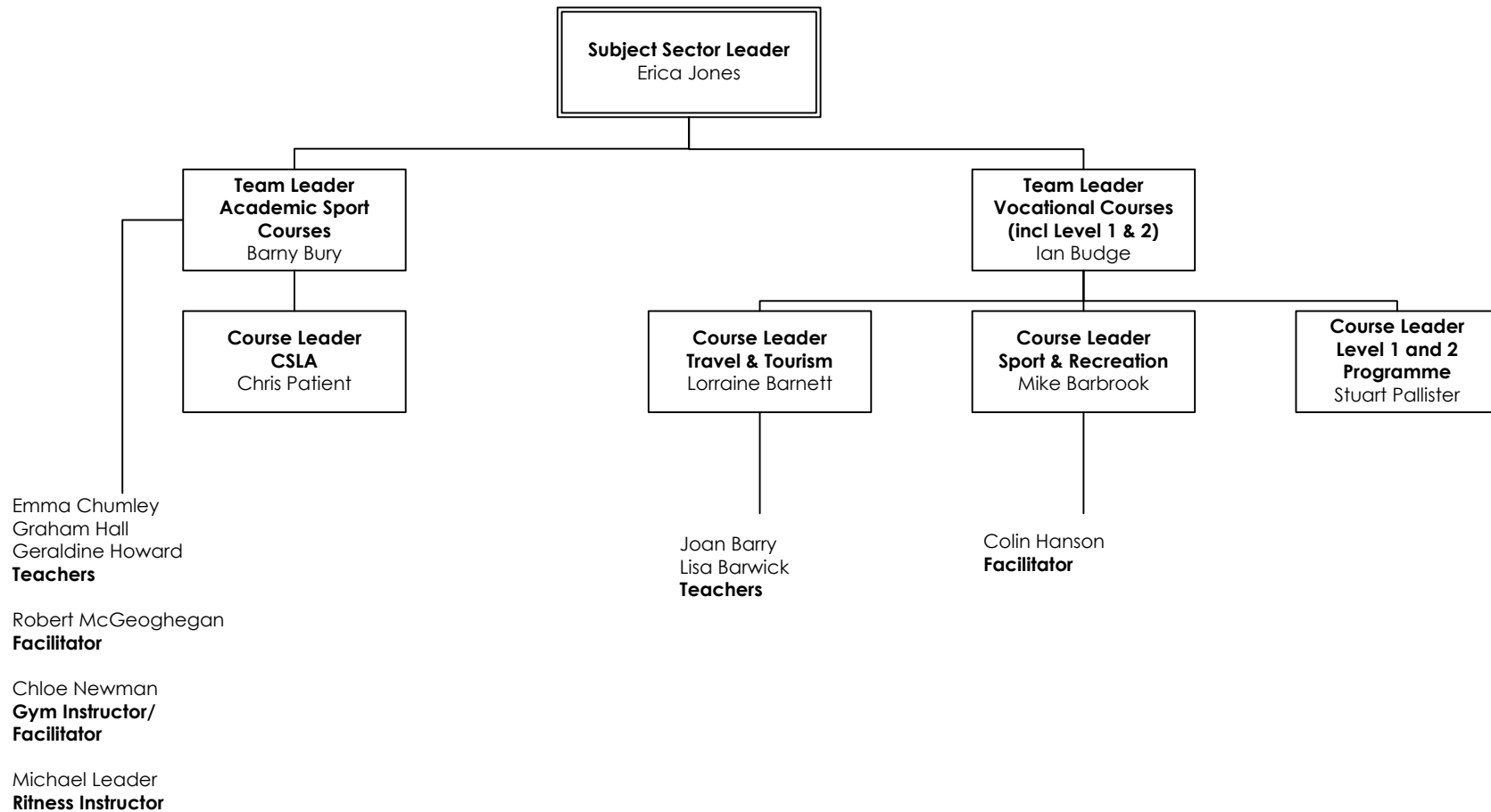
Science and Health



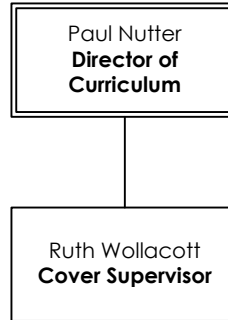
Social Sciences



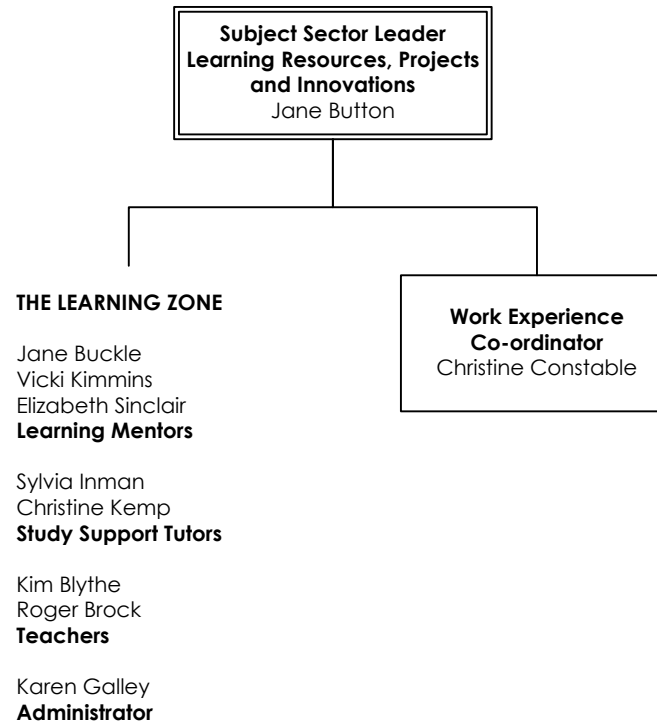
Sport, Leisure, Travel and Tourism



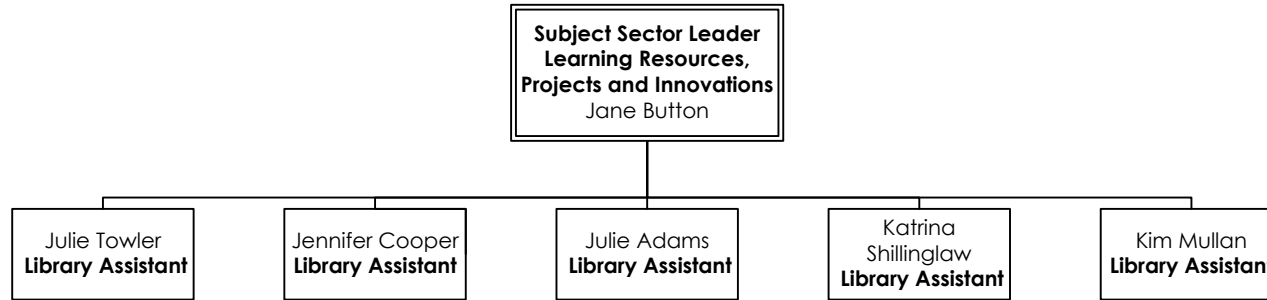
Teaching Cover



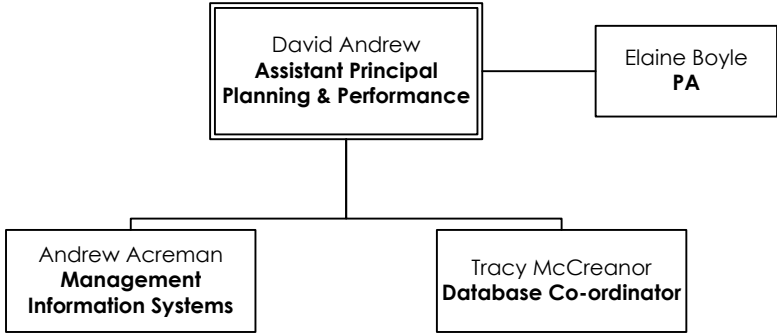
Learning Resources Projects and Innovations



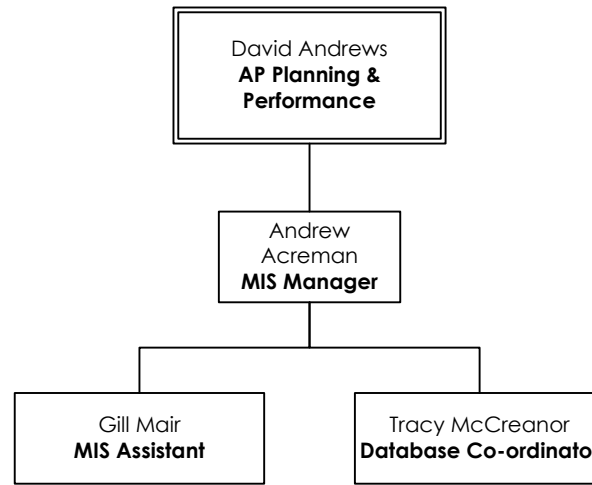
Library



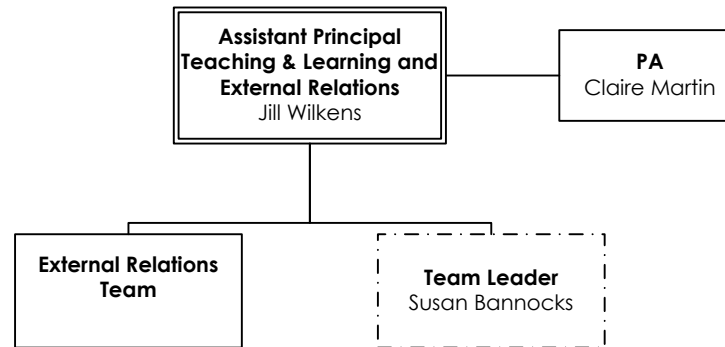
Assistant Principal Planning & Performance



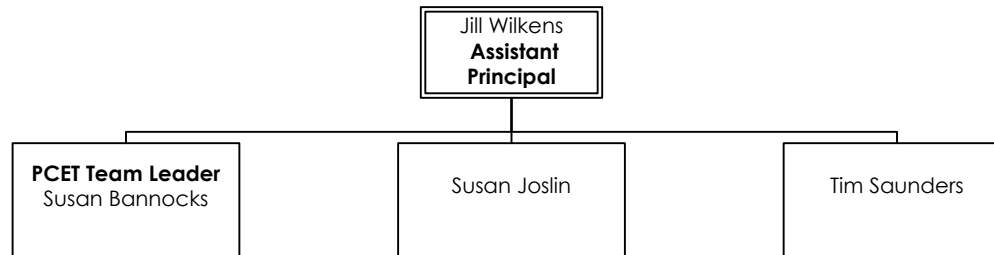
Student Database MIS



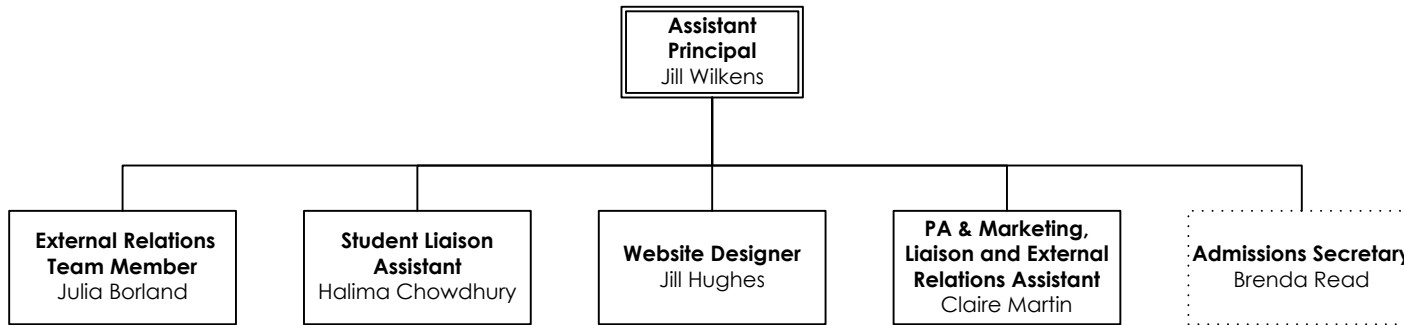
Assistant Principal Teaching & Learning and External Relations



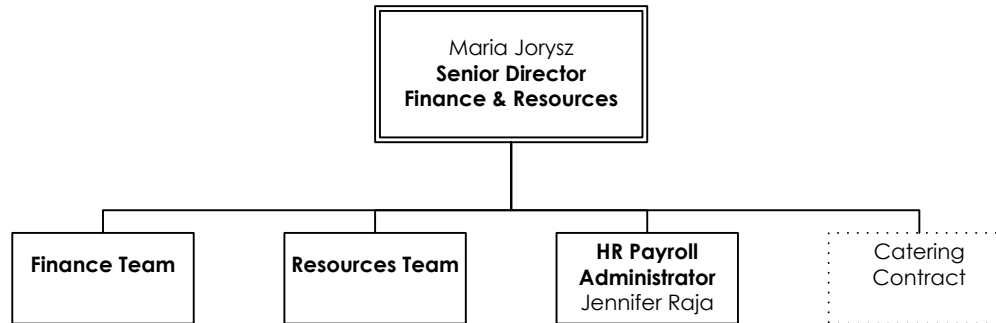
Teaching & Learning Coaches



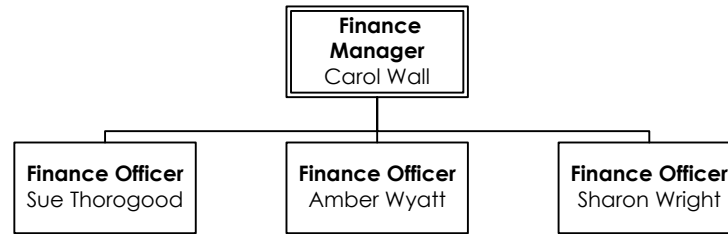
External Relations



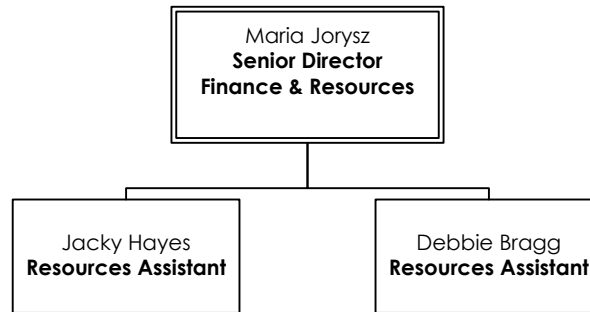
Senior Director Finance & Resources



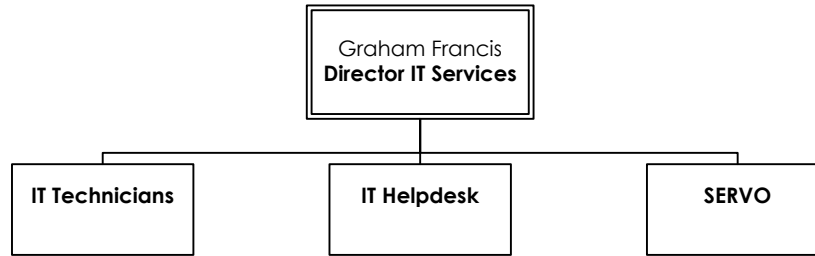
Finance Department



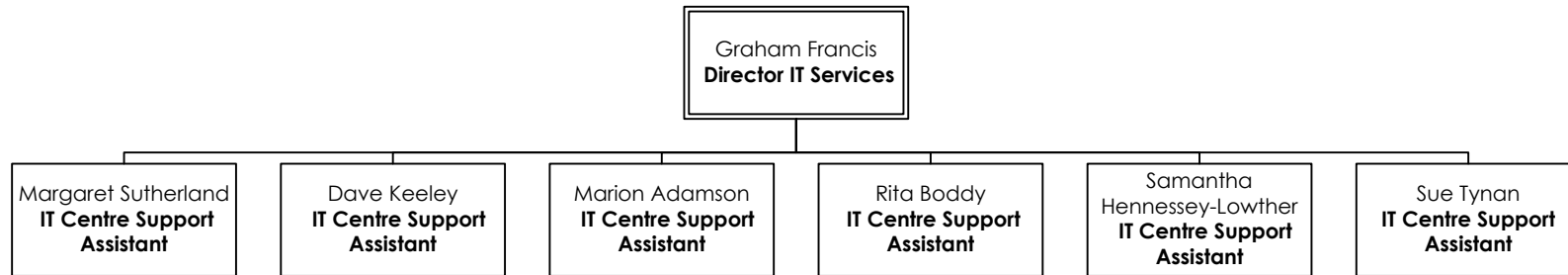
Resources



Director of IT Services



IT Helpdesk



IT Technicians

